

12 Major Scales and Arpeggios

Flute

Band Class Warm-Up

Kelly McCarley

♩ = 80

Bb Chromatic Scale

Musical notation for the Bb Chromatic Scale in 4/4 time. The scale is written on a single staff in treble clef. It consists of two lines of music. The first line starts with a Bb and goes up chromatically to a Bb. The second line starts with a Bb and goes down chromatically to a Bb. The piece ends with a double bar line.

C Major Scale, Your C Scale

Musical notation for the C Major Scale in 4/4 time. The scale is written on a single staff in treble clef. It consists of two lines of music. The first line starts with a C and goes up to a C. The second line starts with a C and goes down to a C. The piece ends with a double bar line.

F Major Scale, Your F Scale

Musical notation for the F Major Scale in 4/4 time. The scale is written on a single staff in treble clef. It consists of two lines of music. The first line starts with an F and goes up to an F. The second line starts with an F and goes down to an F. The piece ends with a double bar line.

Bb Major Scale, Your Bb Scale

Musical notation for the Bb Major Scale in 4/4 time. The scale is written on a single staff in treble clef. It consists of two lines of music. The first line starts with a Bb and goes up to a Bb. The second line starts with a Bb and goes down to a Bb. The piece ends with a double bar line.

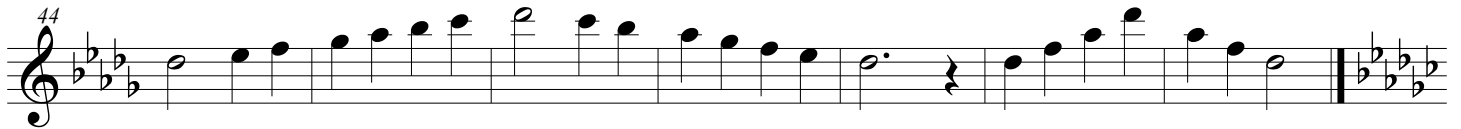
Eb Major Scale, Your Eb Scale

Musical notation for the Eb Major Scale in 4/4 time. The scale is written on a single staff in treble clef. It consists of two lines of music. The first line starts with an Eb and goes up to an Eb. The second line starts with an Eb and goes down to an Eb. The piece ends with a double bar line.

Ab Major Scale, Your Ab Scale

Musical notation for the Ab Major Scale in 4/4 time. The scale is written on a single staff in treble clef. It consists of two lines of music. The first line starts with an Ab and goes up to an Ab. The second line starts with an Ab and goes down to an Ab. The piece ends with a double bar line.

Db Major Scale, Your Db Scale



Gb Major Scale, Your Gb Scale



B Major Scale, Your B Scale



E Major Scale, Your E Scale



A Major Scale, Your A Scale



D Major Scale, Your D Scale



G Major Scale, Your G Scale



12 Major Scales and Arpeggios

Oboe

Band Class Warm-Up

Kelly McCarley

♩ = 80

Bb Chromatic Scale

Musical notation for the Bb Chromatic Scale in 4/4 time. The scale is written on a single staff in treble clef. It begins with a Bb and proceeds chromatically through all 12 notes of the chromatic scale: Bb, B, B#, C, C#, C, D, D#, D, Eb, E, E#, F. The piece concludes with a whole note Bb. A measure rest is placed at the end of the scale.

C Major Scale, Your C Scale

Musical notation for the C Major Scale in 4/4 time. The scale is written on a single staff in treble clef. It begins with a C and proceeds through the major scale: C, D, E, F, G, A, B, C. The piece concludes with a whole note C. A measure rest is placed at the end of the scale.

F Major Scale, Your F Scale

Musical notation for the F Major Scale in 4/4 time. The scale is written on a single staff in treble clef with one flat (Bb). It begins with an F and proceeds through the major scale: F, G, A, Bb, C, D, E, F. The piece concludes with a whole note F. A measure rest is placed at the end of the scale.

Bb Major Scale, Your Bb Scale

Musical notation for the Bb Major Scale in 4/4 time. The scale is written on a single staff in treble clef with two flats (Bb, Eb). It begins with a Bb and proceeds through the major scale: Bb, C, D, Eb, F, G, A, Bb. The piece concludes with a whole note Bb. A measure rest is placed at the end of the scale.

Eb Major Scale, Your Eb Scale

Musical notation for the Eb Major Scale in 4/4 time. The scale is written on a single staff in treble clef with three flats (Bb, Eb, Ab). It begins with an Eb and proceeds through the major scale: Eb, F, G, Ab, Bb, C, D, Eb. The piece concludes with a whole note Eb. A measure rest is placed at the end of the scale.

Ab Major Scale, Your Ab Scale

Musical notation for the Ab Major Scale in 4/4 time. The scale is written on a single staff in treble clef with four flats (Bb, Eb, Ab, Db). It begins with an Ab and proceeds through the major scale: Ab, Bb, C, Db, Eb, F, G, Ab. The piece concludes with a whole note Ab. A measure rest is placed at the end of the scale.

Db Major Scale, Your Db Scale

Musical notation for the Db Major Scale, starting at measure 44. The scale is written in treble clef with a key signature of three flats (Bb, Eb, Ab). The notes are: Bb, C, D, Eb, F, G, Ab, Bb, C, D, Eb, F, G, Ab, Bb. The piece concludes with a double bar line and a key signature change to three flats.

Gb Major Scale, Your Gb Scale

Musical notation for the Gb Major Scale, starting at measure 51. The scale is written in treble clef with a key signature of four flats (Cb, Fb, Bb, Eb). The notes are: Cb, Db, Eb, Fb, Gb, Ab, Bb, Cb, Db, Eb, Fb, Gb, Ab, Bb, Cb. The piece concludes with a double bar line and a key signature change to four flats.

B Major Scale, Your B Scale

Musical notation for the B Major Scale, starting at measure 58. The scale is written in treble clef with a key signature of two sharps (F#, C#). The notes are: B, C#, D, E, F#, G#, A, B, C#, D, E, F#, G#, A, B. The piece concludes with a double bar line and a key signature change to two sharps.

E Major Scale, Your E Scale

Musical notation for the E Major Scale, starting at measure 65. The scale is written in treble clef with a key signature of three sharps (F#, C#, G#). The notes are: E, F#, G#, A, B, C#, D, E, F#, G#, A, B, C#, D, E. The piece concludes with a double bar line and a key signature change to three sharps.

A Major Scale, Your A Scale

Musical notation for the A Major Scale, starting at measure 72. The scale is written in treble clef with a key signature of three sharps (F#, C#, G#). The notes are: A, B, C#, D, E, F#, G#, A, B, C#, D, E, F#, G#, A. The piece concludes with a double bar line and a key signature change to three sharps.

D Major Scale, Your D Scale

Musical notation for the D Major Scale, starting at measure 79. The scale is written in treble clef with a key signature of two sharps (F#, C#). The notes are: D, E, F#, G, A, B, C#, D, E, F#, G, A, B, C#, D. The piece concludes with a double bar line and a key signature change to two sharps.

G Major Scale, Your G Scale

Musical notation for the G Major Scale, starting at measure 86. The scale is written in treble clef with a key signature of one sharp (F#). The notes are: G, A, B, C, D, E, F#, G, A, B, C, D, E, F#, G. The piece concludes with a double bar line and a key signature change to one sharp.

12 Major Scales and Arpeggios

Bassoon

Band Class Warm-Up

Kelly McCarley

♩ = 80

Bb Chromatic Scale



Two staves of music for the Bb Chromatic Scale in 4/4 time. The first staff starts with a bass clef and a key signature of two flats (Bb). The scale is written in eighth notes, ascending and then descending. The second staff continues the scale, starting with a measure number '5' above the first note.

C Major Scale, Your C Scale



One staff of music for the C Major Scale in 4/4 time, starting with a measure number '9' above the first note. The scale is written in eighth notes, ascending and then descending.

F Major Scale, Your F Scale



One staff of music for the F Major Scale in 4/4 time, starting with a measure number '16' above the first note. The scale is written in eighth notes, ascending and then descending.

Bb Major Scale, Your Bb Scale




One staff of music for the Bb Major Scale in 4/4 time, starting with a measure number '23' above the first note. The scale is written in eighth notes, ascending and then descending.

Eb Major Scale, Your Eb Scale



One staff of music for the Eb Major Scale in 4/4 time, starting with a measure number '30' above the first note. The scale is written in eighth notes, ascending and then descending.

Ab Major Scale, Your Ab Scale



One staff of music for the Ab Major Scale in 4/4 time, starting with a measure number '37' above the first note. The scale is written in eighth notes, ascending and then descending.

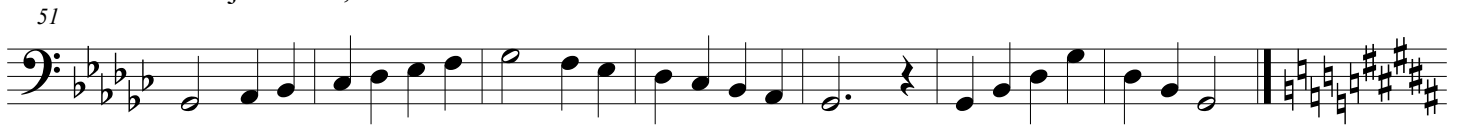
Db Major Scale, Your Db Scale

44



Gb Major Scale, Your Gb Scale

51



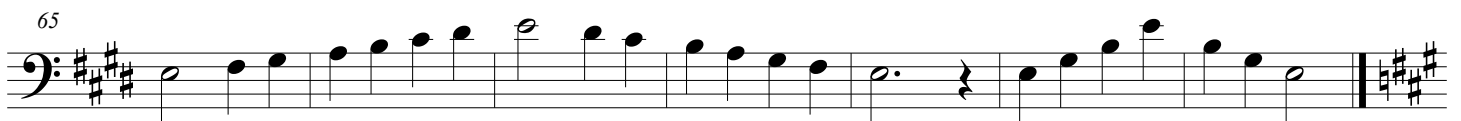
B Major Scale, Your B Scale

58



E Major Scale, Your E Scale

65



A Major Scale, Your A Scale

72



D Major Scale, Your D Scale

79



G Major Scale, Your G Scale

86



12 Major Scales and Arpeggios

Clarinet in B \flat

Band Class Warm-Up

Kelly McCarley

$\text{♩} = 80$

B \flat Chromatic Scale

Musical notation for the B \flat Chromatic Scale in 4/4 time. The scale is written in two staves. The first staff shows the ascending scale from B \flat to G \sharp (B \flat , B, C \flat , C, C \sharp , D \flat , D, D \sharp , E \flat , E, E \sharp , F \flat , F, F \sharp , G \flat , G, G \sharp , A \flat , A, A \sharp , B \flat). The second staff shows the descending scale from G \sharp to B \flat (G \sharp , G \flat , F \sharp , F \flat , E \sharp , E \flat , D \sharp , D \flat , C \sharp , C \flat , B \sharp , B \flat , A \sharp , A \flat , G \sharp , G \flat , F \sharp , F \flat , E \sharp , E \flat , D \sharp , D \flat , C \sharp , C \flat , B \sharp , B \flat). The piece concludes with a final B \flat note and a double bar line.

C Major Scale, Your D Scale

Musical notation for the C Major Scale and D Major Scale in 4/4 time. The first staff shows the C Major Scale (C, D, E, F, G, A, B, C). The second staff shows the D Major Scale (D, E, F \sharp , G, A, B, C \sharp , D). The piece concludes with a final C \sharp note and a double bar line.

F Major Scale, Your G Scale

Musical notation for the F Major Scale and G Major Scale in 4/4 time. The first staff shows the F Major Scale (F, G, A, B \flat , C, D, E, F). The second staff shows the G Major Scale (G, A, B, C, D, E, F \sharp , G). The piece concludes with a final G \sharp note and a double bar line.

B \flat Major Scale, Your C Scale

Musical notation for the B \flat Major Scale and C Major Scale in 4/4 time. The first staff shows the B \flat Major Scale (B \flat , C, D, E \flat , F, G, A, B \flat). The second staff shows the C Major Scale (C, D, E, F, G, A, B, C). The piece concludes with a final B \flat note and a double bar line.

E \flat Major Scale, Your F Scale

Musical notation for the E \flat Major Scale and F Major Scale in 4/4 time. The first staff shows the E \flat Major Scale (E \flat , F, G, A \flat , B \flat , C, D, E \flat). The second staff shows the F Major Scale (F, G, A, B \flat , C, D, E, F). The piece concludes with a final E \flat note and a double bar line.

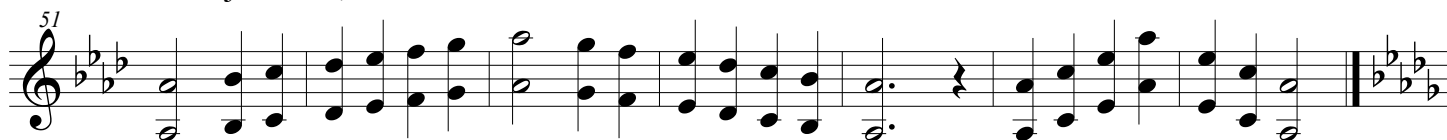
A \flat Major Scale, Your B \flat Scale

Musical notation for the A \flat Major Scale and B \flat Major Scale in 4/4 time. The first staff shows the A \flat Major Scale (A \flat , B \flat , C, D \flat , E \flat , F, G, A \flat). The second staff shows the B \flat Major Scale (B \flat , C, D, E \flat , F, G, A, B \flat). The piece concludes with a final B \flat note and a double bar line.

Db Major Scale, Your Eb Scale



Gb Major Scale, Your Ab Scale



B Major Scale, Your Db Scale



E Major Scale, Your F# Scale



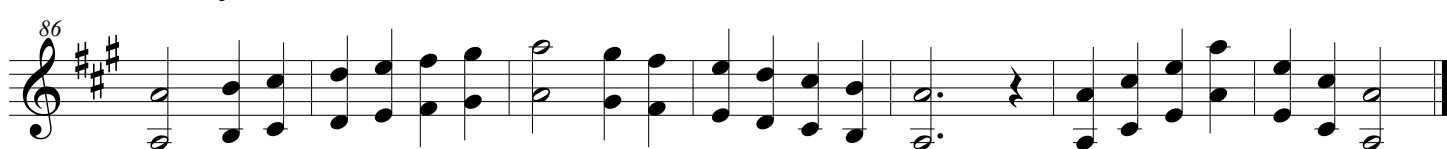
A Major Scale, Your B Scale



D Major Scale, Your E Scale



G Major Scale, Your A Scale



12 Major Scales and Arpeggios

Bass Clarinet

Band Class Warm-Up

Kelly McCarley

♩ = 80

Bb Chromatic Scale

Musical notation for the Bb Chromatic Scale. It consists of two staves of music in 4/4 time. The first staff starts on middle C (C4) and ascends chromatically through Bb, B, C, C#, D, D#, E, E#, F, F#, G, G#, A, A#, Bb, B, C. The second staff starts on C4 and descends chromatically through B, Bb, A, Ab, G, Gb, F, Fb, E, Eb, D, Db, C, Bb, B, C. The piece concludes with a double bar line and a key signature change to two sharps (F# and C#).

C Major Scale, Your D Scale

Musical notation for the C Major Scale and D Major Scale. It consists of two staves of music in 4/4 time. The first staff starts on middle C (C4) and ascends through C, D, E, F, G, A, B, C. The second staff starts on D4 and ascends through D, E, F#, G, A, B, C, D. The piece concludes with a double bar line and a key signature change to two sharps (F# and C#).

F Major Scale, Your G Scale

Musical notation for the F Major Scale and G Major Scale. It consists of two staves of music in 4/4 time. The first staff starts on F4 and ascends through F, G, A, Bb, C, D, E, F. The second staff starts on G4 and ascends through G, A, B, C, D, E, F#, G. The piece concludes with a double bar line and a key signature change to one sharp (F#).

Bb Major Scale, Your C Scale

Musical notation for the Bb Major Scale and C Major Scale. It consists of two staves of music in 4/4 time. The first staff starts on Bb4 and ascends through Bb, C, D, Eb, F, G, A, Bb. The second staff starts on C4 and ascends through C, D, E, F, G, A, B, C. The piece concludes with a double bar line and a key signature change to one flat (Bb).

Eb Major Scale, Your F Scale

Musical notation for the Eb Major Scale and F Major Scale. It consists of two staves of music in 4/4 time. The first staff starts on Eb4 and ascends through Eb, F, G, Ab, Bb, C, D, Eb. The second staff starts on F4 and ascends through F, G, A, Bb, C, D, E, F. The piece concludes with a double bar line and a key signature change to two flats (Bb and Eb).

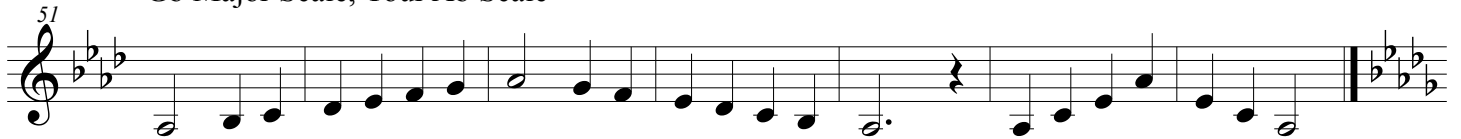
Ab Major Scale, Your Bb Scale

Musical notation for the Ab Major Scale and Bb Major Scale. It consists of two staves of music in 4/4 time. The first staff starts on Ab4 and ascends through Ab, Bb, C, Db, Eb, F, G, Ab. The second staff starts on Bb4 and ascends through Bb, C, D, Eb, F, G, Ab, Bb. The piece concludes with a double bar line and a key signature change to three flats (Bb, Eb, and Ab).

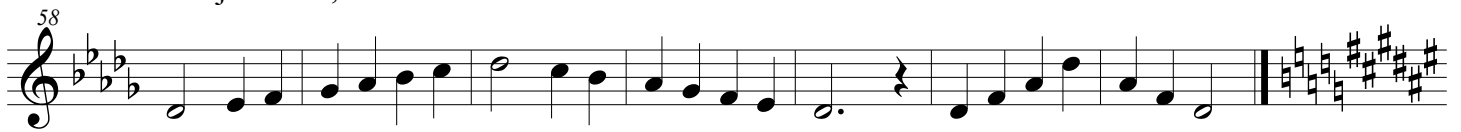
Db Major Scale, Your Eb Scale



Gb Major Scale, Your Ab Scale



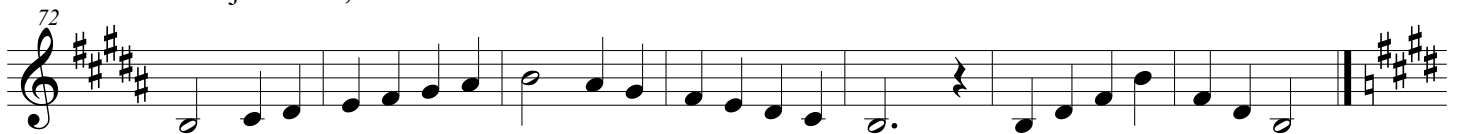
B Major Scale, Your Db Scale



E Major Scale, Your F# Scale



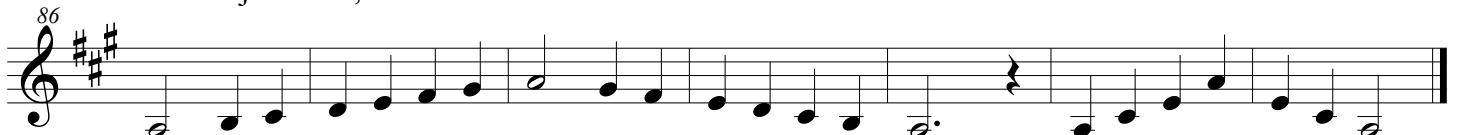
A Major Scale, Your B Scale



D Major Scale, Your E Scale



G Major Scale, Your A Scale



12 Major Scales and Arpeggios

Alto Sax

Band Class Warm-Up

Kelly McCarley

♩ = 80

Bb Chromatic Scale

Musical notation for the Bb Chromatic Scale in 4/4 time. The scale is written across two staves. The first staff starts on Bb and ascends chromatically to C. The second staff starts on C and descends chromatically to Bb. The piece concludes with a double bar line and a key signature change to C major.

C Major Scale, Your A Scale

Musical notation for the C Major Scale, also referred to as the A Scale, in 4/4 time. The scale is written across one staff, starting on C and ascending to C. The piece concludes with a double bar line and a key signature change to A major.

F Major Scale, Your D Scale

Musical notation for the F Major Scale, also referred to as the D Scale, in 4/4 time. The scale is written across one staff, starting on F and ascending to F. The piece concludes with a double bar line and a key signature change to D major.

Bb Major Scale, Your G Scale

Musical notation for the Bb Major Scale, also referred to as the G Scale, in 4/4 time. The scale is written across one staff, starting on Bb and ascending to Bb. The piece concludes with a double bar line and a key signature change to G major.

Eb Major Scale, Your C Scale

Musical notation for the Eb Major Scale, also referred to as the C Scale, in 4/4 time. The scale is written across one staff, starting on Eb and ascending to Eb. The piece concludes with a double bar line and a key signature change to C major.

Ab Major Scale, Your F Scale

Musical notation for the Ab Major Scale, also referred to as the F Scale, in 4/4 time. The scale is written across one staff, starting on Ab and ascending to Ab. The piece concludes with a double bar line and a key signature change to F major.

Db Major Scale, Your Bb Scale



Gb Major Scale, Your Eb Scale



B Major Scale, Your Ab Scale



E Major Scale, Your Db Scale



A Major Scale, Your F# Scale



D Major Scale, Your B Scale



G Major Scale, Your E Scale



12 Major Scales and Arpeggios

Tenor Sax

Band Class Warm-Up

Kelly McCarley

♩ = 80

Bb Chromatic Scale

Musical notation for the Bb Chromatic Scale in 4/4 time. The scale is written on a single staff in treble clef. It consists of two lines of music. The first line starts with a 4/4 time signature and contains the first eight notes of the scale: Bb, B, B#, C, C#, C, B, Bb. The second line starts with a measure rest and contains the remaining notes: Bb, B, B#, C, C#, C, B, Bb, ending with a double bar line and a key signature change to two sharps (F# and C#).

C Major Scale, Your D Scale

Musical notation for the C Major Scale and D Major Scale in 4/4 time. The scale is written on a single staff in treble clef. It starts with a 9-measure rest. The first line contains the C Major scale: C, D, E, F, G, A, B, C. The second line contains the D Major scale: D, E, F#, G, A, B, C, D, ending with a double bar line and a key signature change to two sharps (F# and C#).

F Major Scale, Your G Scale

Musical notation for the F Major Scale and G Major Scale in 4/4 time. The scale is written on a single staff in treble clef. It starts with a 16-measure rest. The first line contains the F Major scale: F, G, A, Bb, C, D, E, F. The second line contains the G Major scale: G, A, B, C, D, E, F#, G, ending with a double bar line and a key signature change to two sharps (F# and C#).

Bb Major Scale, Your C Scale

Musical notation for the Bb Major Scale and C Major Scale in 4/4 time. The scale is written on a single staff in treble clef. It starts with a 23-measure rest. The first line contains the Bb Major scale: Bb, C, D, Eb, F, G, A, Bb. The second line contains the C Major scale: C, D, E, F, G, A, B, C, ending with a double bar line and a key signature change to two sharps (F# and C#).

Eb Major Scale, Your F Scale

Musical notation for the Eb Major Scale and F Major Scale in 4/4 time. The scale is written on a single staff in treble clef. It starts with a 30-measure rest. The first line contains the Eb Major scale: Eb, F, G, Ab, Bb, C, D, Eb. The second line contains the F Major scale: F, G, A, Bb, C, D, E, F, ending with a double bar line and a key signature change to two sharps (F# and C#).

Ab Major Scale, Your Bb Scale

Musical notation for the Ab Major Scale and Bb Major Scale in 4/4 time. The scale is written on a single staff in treble clef. It starts with a 37-measure rest. The first line contains the Ab Major scale: Ab, Bb, C, Db, Eb, F, G, Ab. The second line contains the Bb Major scale: Bb, C, D, Eb, F, G, Ab, Bb, ending with a double bar line and a key signature change to two sharps (F# and C#).

Db Major Scale, Your Eb Scale



Gb Major Scale, Your Ab Scale



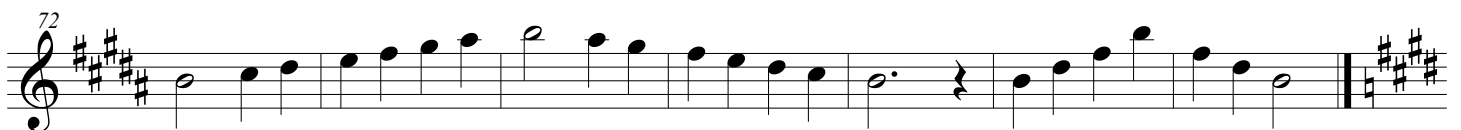
B Major Scale, Your Db Scale



E Major Scale, Your F# Scale



A Major Scale, Your B Scale



D Major Scale, Your E Scale



G Major Scale, Your A Scale



12 Major Scales and Arpeggios

Baritone Sax

Band Class Warm-Up

Kelly McCarley

♩ = 80

Bb Chromatic Scale

Musical notation for the Bb Chromatic Scale. It consists of two staves of music in 4/4 time. The first staff shows the ascending scale from Bb4 to Bb5. The second staff shows the descending scale from Bb5 to Bb4, with a double bar line and key signature change to C major at the end.

C Major Scale, Your A Scale

Musical notation for the C Major Scale, Your A Scale. It consists of two staves of music in 4/4 time. The first staff shows the ascending scale from C4 to C5. The second staff shows the descending scale from C5 to C4, with a double bar line and key signature change to A major at the end.

F Major Scale, Your D Scale

Musical notation for the F Major Scale, Your D Scale. It consists of two staves of music in 4/4 time. The first staff shows the ascending scale from F4 to F5. The second staff shows the descending scale from F5 to F4, with a double bar line and key signature change to D major at the end.

Bb Major Scale, Your G Scale

Musical notation for the Bb Major Scale, Your G Scale. It consists of two staves of music in 4/4 time. The first staff shows the ascending scale from Bb4 to Bb5. The second staff shows the descending scale from Bb5 to Bb4, with a double bar line and key signature change to G major at the end.

Eb Major Scale, Your C Scale

Musical notation for the Eb Major Scale, Your C Scale. It consists of two staves of music in 4/4 time. The first staff shows the ascending scale from Eb4 to Eb5. The second staff shows the descending scale from Eb5 to Eb4, with a double bar line and key signature change to C major at the end.

Ab Major Scale, Your F Scale

Musical notation for the Ab Major Scale, Your F Scale. It consists of two staves of music in 4/4 time. The first staff shows the ascending scale from Ab4 to Ab5. The second staff shows the descending scale from Ab5 to Ab4, with a double bar line and key signature change to F major at the end.

Db Major Scale, Your B Scale



Gb Major Scale, Your Eb Scale



B Major Scale, Your Ab Scale



E Major Scale, Your Db Scale



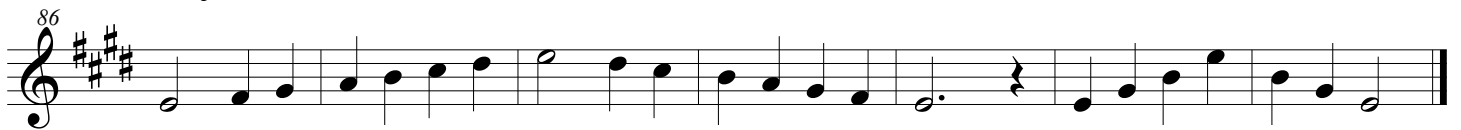
A Major Scale, Your F# Scale



D Major Scale, Your B Scale



G Major Scale, Your E Scale



12 Major Scales and Arpeggios

Trumpet in B \flat

Band Class Warm-Up

Kelly McCarley

$\text{♩} = 80$

B \flat Chromatic Scale

Musical notation for the B \flat Chromatic Scale in 4/4 time. The scale is written on a single staff in treble clef. It consists of two lines of music. The first line starts on middle C (C4) and ascends chromatically to B \flat 4. The second line starts on B \flat 4 and descends chromatically to C3. The piece ends with a double bar line and a key signature change to two sharps (F# and C#).

C Major Scale, Your D Scale

Musical notation for the C Major Scale and D Major Scale in 4/4 time. The scale is written on a single staff in treble clef. It consists of two lines of music. The first line starts on middle C (C4) and ascends to G4. The second line starts on G4 and descends to C3. The piece ends with a double bar line and a key signature change to two sharps (F# and C#).

F Major Scale, Your G Scale

Musical notation for the F Major Scale and G Major Scale in 4/4 time. The scale is written on a single staff in treble clef. It consists of two lines of music. The first line starts on F4 and ascends to D5. The second line starts on D5 and descends to F3. The piece ends with a double bar line and a key signature change to one sharp (F#).

B \flat Major Scale, Your C Scale

Musical notation for the B \flat Major Scale and C Major Scale in 4/4 time. The scale is written on a single staff in treble clef. It consists of two lines of music. The first line starts on B \flat 4 and ascends to G4. The second line starts on G4 and descends to B \flat 3. The piece ends with a double bar line and a key signature change to one flat (B \flat).

E \flat Major Scale, Your F Scale

Musical notation for the E \flat Major Scale and F Major Scale in 4/4 time. The scale is written on a single staff in treble clef. It consists of two lines of music. The first line starts on E \flat 4 and ascends to D5. The second line starts on D5 and descends to E \flat 3. The piece ends with a double bar line and a key signature change to two flats (B \flat and E \flat).

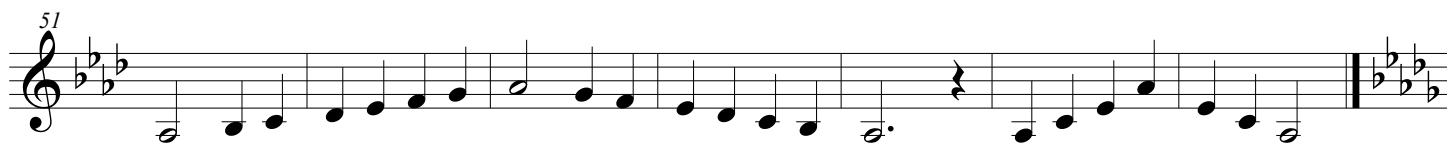
A \flat Major Scale, Your B \flat Scale

Musical notation for the A \flat Major Scale and B \flat Major Scale in 4/4 time. The scale is written on a single staff in treble clef. It consists of two lines of music. The first line starts on A \flat 4 and ascends to G4. The second line starts on G4 and descends to A \flat 3. The piece ends with a double bar line and a key signature change to three flats (B \flat , E \flat , and A \flat).

Db Major Scale, Your Eb Scale



Gb Major Scale, Your Ab Scale



B Major Scale, Your Db Scale



E Major Scale, Your F# Scale



A Major Scale, Your B Scale



D Major Scale, Your E Scale



G Major Scale, Your A Scale



12 Major Scales and Arpeggios

Trumpet in B \flat 2

Band Class Warm-Up

Kelly McCarley

$\text{♩} = 80$

B \flat Chromatic Scale

Musical notation for the B \flat Chromatic Scale in 4/4 time. The scale is written on a single staff in treble clef. It consists of two lines of music. The first line starts on middle C (C4) and ascends chromatically to B \flat 4. The second line starts on B \flat 4 and descends chromatically to C3. The piece ends with a double bar line and a key signature change to two sharps (F# and C#).

C Major Scale, Your D Scale

Musical notation for the C Major Scale and D Major Scale in 4/4 time. The scale is written on a single staff in treble clef. It starts on middle C (C4) and ascends to C5. The second line starts on D4 and ascends to D5. The piece ends with a double bar line and a key signature change to two sharps (F# and C#).

F Major Scale, Your G Scale

Musical notation for the F Major Scale and G Major Scale in 4/4 time. The scale is written on a single staff in treble clef. It starts on F4 and ascends to F5. The second line starts on G4 and ascends to G5. The piece ends with a double bar line and a key signature change to one sharp (F#).

B \flat Major Scale, Your C Scale

Musical notation for the B \flat Major Scale and C Major Scale in 4/4 time. The scale is written on a single staff in treble clef. It starts on B \flat 4 and ascends to B \flat 5. The second line starts on C4 and ascends to C5. The piece ends with a double bar line and a key signature change to one flat (B \flat).

E \flat Major Scale, Your F Scale

Musical notation for the E \flat Major Scale and F Major Scale in 4/4 time. The scale is written on a single staff in treble clef. It starts on E \flat 4 and ascends to E \flat 5. The second line starts on F4 and ascends to F5. The piece ends with a double bar line and a key signature change to two flats (B \flat and E \flat).

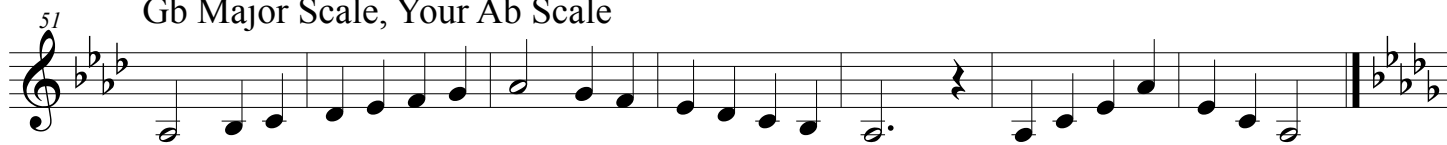
A \flat Major Scale, Your B \flat Scale

Musical notation for the A \flat Major Scale and B \flat Major Scale in 4/4 time. The scale is written on a single staff in treble clef. It starts on A \flat 4 and ascends to A \flat 5. The second line starts on B \flat 4 and ascends to B \flat 5. The piece ends with a double bar line and a key signature change to three flats (B \flat , E \flat , and A \flat).

Db Major Scale, Your Eb Scale



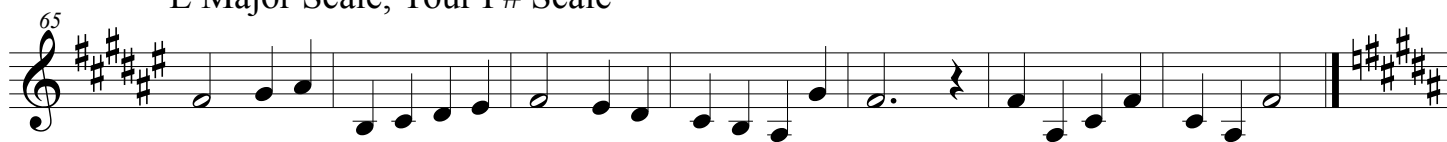
Gb Major Scale, Your Ab Scale



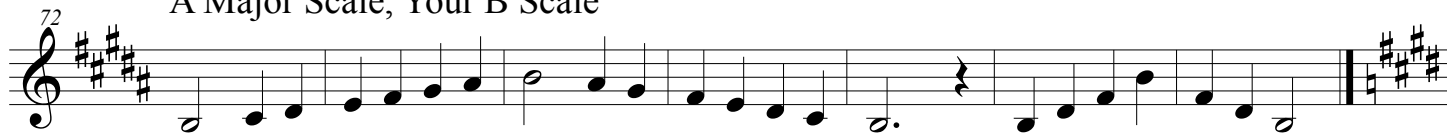
B Major Scale, Your Db Scale



E Major Scale, Your F# Scale



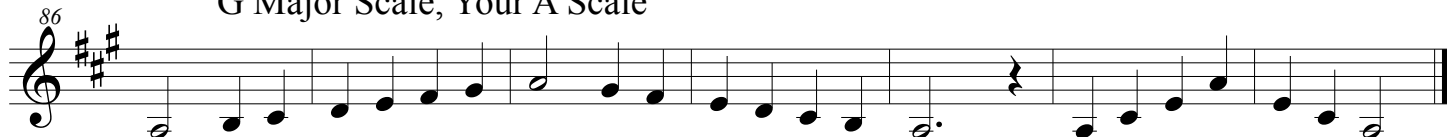
A Major Scale, Your B Scale



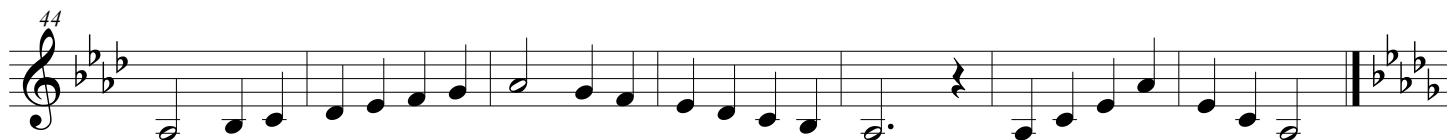
D Major Scale, Your E Scale



G Major Scale, Your A Scale



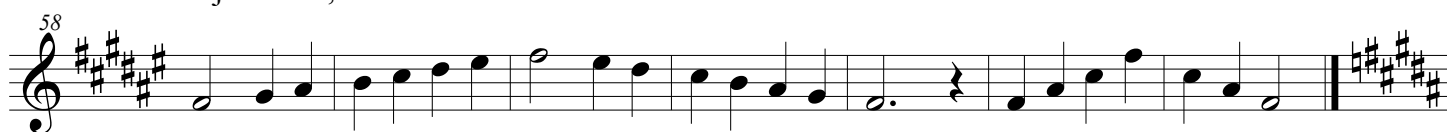
Db Major Scale, Your Ab Scale



Gb Major Scale, Your Db Scale



B Major Scale, Your F# Scale



E Major Scale, Your B Scale



A Major Scale, Your E Scale



D Major Scale, Your A Scale



G Major Scale, Your D Scale



12 Major Scales and Arpeggios

Trombone

Band Class Warm-Up

Kelly McCarley

♩ = 80

Bb Chromatic Scale

Two staves of music for the Bb Chromatic Scale. The first staff shows the ascending scale from Bb2 to Bb4. The second staff shows the descending scale from Bb4 to Bb2. The key signature has two flats (Bb and Eb), and the time signature is 4/4. The piece ends with a double bar line.

C Major Scale, Your C Scale

Two staves of music for the C Major Scale. The first staff shows the ascending scale from C2 to C4. The second staff shows the descending scale from C4 to C2. The key signature has no sharps or flats, and the time signature is 4/4. The piece ends with a double bar line.

F Major Scale, Your F Scale

Two staves of music for the F Major Scale. The first staff shows the ascending scale from F2 to F4. The second staff shows the descending scale from F4 to F2. The key signature has one flat (Bb), and the time signature is 4/4. The piece ends with a double bar line.

Bb Major Scale, Your Bb Scale

Two staves of music for the Bb Major Scale. The first staff shows the ascending scale from Bb2 to Bb4. The second staff shows the descending scale from Bb4 to Bb2. The key signature has two flats (Bb and Eb), and the time signature is 4/4. The piece ends with a double bar line.

Eb Major Scale, Your Eb Scale

Two staves of music for the Eb Major Scale. The first staff shows the ascending scale from Eb2 to Eb4. The second staff shows the descending scale from Eb4 to Eb2. The key signature has three flats (Bb, Eb, and Ab), and the time signature is 4/4. The piece ends with a double bar line.

Ab Major Scale, Your Ab Scale

Two staves of music for the Ab Major Scale. The first staff shows the ascending scale from Ab2 to Ab4. The second staff shows the descending scale from Ab4 to Ab2. The key signature has four flats (Bb, Eb, Ab, and Db), and the time signature is 4/4. The piece ends with a double bar line.

Db Major Scale, Your Db Scale

44

Gb Major Scale, Your Gb Scale

51

B Major Scale, Your B Scale

58

E Major Scale, Your E Scale

65

A Major Scale, Your A Scale

72

D Major Scale, Your D Scale

79

G Major Scale, Your G Scale

86

12 Major Scales and Arpeggios

Band Class Warm-Up

Kelly McCarley

Baritone (T.C.)

♩ = 80

Bb Chromatic Scale

Musical notation for the Bb Chromatic Scale. It consists of two staves of music in 4/4 time. The first staff starts on middle C (C4) and ascends chromatically to Bb4. The second staff starts on Bb4 and descends chromatically to C3. The piece concludes with a double bar line and a key signature change to two sharps (F# and C#).

C Major Scale, Your D Scale

Musical notation for the C Major Scale and D Major Scale. It consists of two staves of music in 4/4 time. The first staff starts on middle C (C4) and ascends to C5. The second staff starts on D4 and ascends to D5. The piece concludes with a double bar line and a key signature change to two sharps (F# and C#).

F Major Scale, Your G Scale

Musical notation for the F Major Scale and G Major Scale. It consists of two staves of music in 4/4 time. The first staff starts on F4 and ascends to F5. The second staff starts on G4 and ascends to G5. The piece concludes with a double bar line and a key signature change to one sharp (F#).

Bb Major Scale, Your C Scale

Musical notation for the Bb Major Scale and C Major Scale. It consists of two staves of music in 4/4 time. The first staff starts on Bb4 and ascends to Bb5. The second staff starts on C4 and ascends to C5. The piece concludes with a double bar line and a key signature change to one flat (Bb).

Eb Major Scale, Your F Scale

Musical notation for the Eb Major Scale and F Major Scale. It consists of two staves of music in 4/4 time. The first staff starts on Eb4 and ascends to Eb5. The second staff starts on F4 and ascends to F5. The piece concludes with a double bar line and a key signature change to two flats (Bb and Eb).

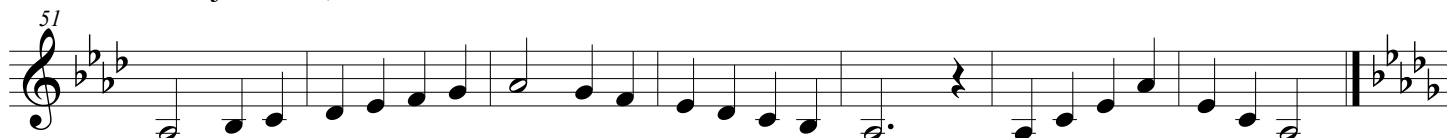
Ab Major Scale, Your Bb Scale

Musical notation for the Ab Major Scale and Bb Major Scale. It consists of two staves of music in 4/4 time. The first staff starts on Ab4 and ascends to Ab5. The second staff starts on Bb4 and ascends to Bb5. The piece concludes with a double bar line and a key signature change to three flats (Bb, Eb, and Ab).

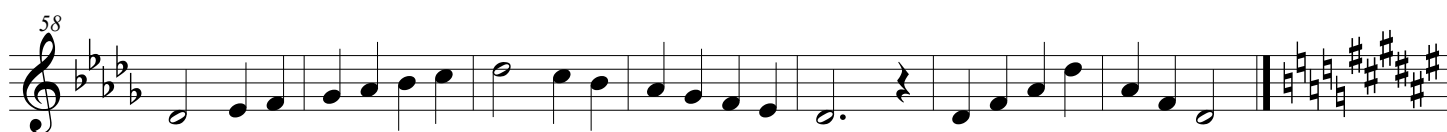
Db Major Scale, Your Eb Scale



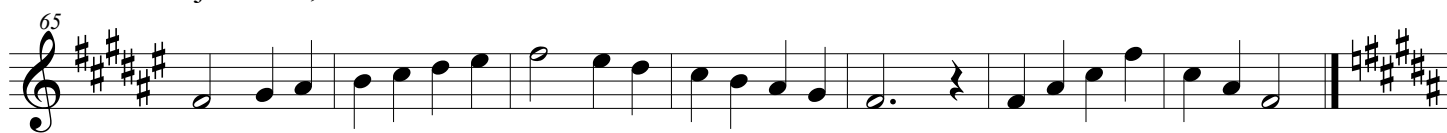
Gb Major Scale, Your Ab Scale



B Major Scale, Your Db Scale



E Major Scale, Your F# Scale



A Major Scale, Your B Scale



D Major Scale, Your E Scale



G Major Scale, Your A Scale



12 Major Scales and Arpeggios

Baritone (B.C.)

Band Class Warm-Up

Kelly McCarley

♩ = 80

Bb Chromatic Scale

Musical notation for the Bb Chromatic Scale in 4/4 time. The scale is written in bass clef and consists of two lines of music. The first line starts with a bass clef, a 4/4 time signature, and a key signature of two flats (Bb). The notes are: Bb, B, Cb, C, C#, C, D, D#, D, Eb, E, E, Fb, F, F#, F, G, G#, G, Ab, A, A, Bb. The second line starts with a measure rest, followed by the notes: Bb, B, Cb, C, C#, C, D, D#, D, Eb, E, E, Fb, F, F#, F, G, G#, G, Ab, A, A, Bb. The piece ends with a double bar line.

C Major Scale, Your C Scale

Musical notation for the C Major Scale in 4/4 time. The scale is written in bass clef and consists of two lines of music. The first line starts with a bass clef, a 4/4 time signature, and a key signature of one flat (C). The notes are: C, C, D, D, E, E, F, F, G, G, A, A, B, B, C. The second line starts with a measure rest, followed by the notes: C, C, D, D, E, E, F, F, G, G, A, A, B, B, C. The piece ends with a double bar line.

F Major Scale, Your F Scale

Musical notation for the F Major Scale in 4/4 time. The scale is written in bass clef and consists of two lines of music. The first line starts with a bass clef, a 4/4 time signature, and a key signature of one flat (F). The notes are: F, F, G, G, A, A, B, B, C, C, D, D, E, E, F. The second line starts with a measure rest, followed by the notes: F, F, G, G, A, A, B, B, C, C, D, D, E, E, F. The piece ends with a double bar line.

Bb Major Scale, Your Bb Scale

Musical notation for the Bb Major Scale in 4/4 time. The scale is written in bass clef and consists of two lines of music. The first line starts with a bass clef, a 4/4 time signature, and a key signature of two flats (Bb). The notes are: Bb, Bb, C, C, D, D, Eb, Eb, F, F, G, G, Ab, Ab, Bb. The second line starts with a measure rest, followed by the notes: Bb, Bb, C, C, D, D, Eb, Eb, F, F, G, G, Ab, Ab, Bb. The piece ends with a double bar line.

Eb Major Scale, Your Eb Scale

Musical notation for the Eb Major Scale in 4/4 time. The scale is written in bass clef and consists of two lines of music. The first line starts with a bass clef, a 4/4 time signature, and a key signature of three flats (Eb). The notes are: Eb, Eb, F, F, G, G, Ab, Ab, Bb, Bb, C, C, D, D, Eb. The second line starts with a measure rest, followed by the notes: Eb, Eb, F, F, G, G, Ab, Ab, Bb, Bb, C, C, D, D, Eb. The piece ends with a double bar line.

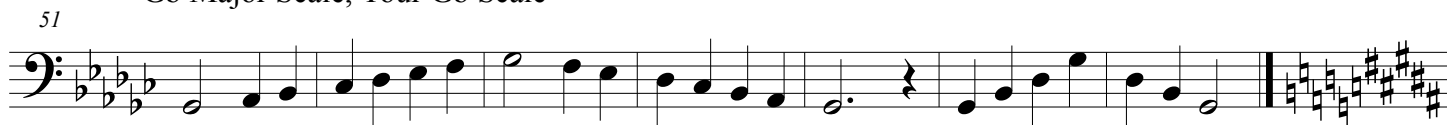
Ab Major Scale, Your Ab Scale

Musical notation for the Ab Major Scale in 4/4 time. The scale is written in bass clef and consists of two lines of music. The first line starts with a bass clef, a 4/4 time signature, and a key signature of four flats (Ab). The notes are: Ab, Ab, Bb, Bb, C, C, D, D, Eb, Eb, F, F, G, G, Ab. The second line starts with a measure rest, followed by the notes: Ab, Ab, Bb, Bb, C, C, D, D, Eb, Eb, F, F, G, G, Ab. The piece ends with a double bar line.

Db Major Scale, Your Db Scale



Gb Major Scale, Your Gb Scale



B Major Scale, Your B Scale



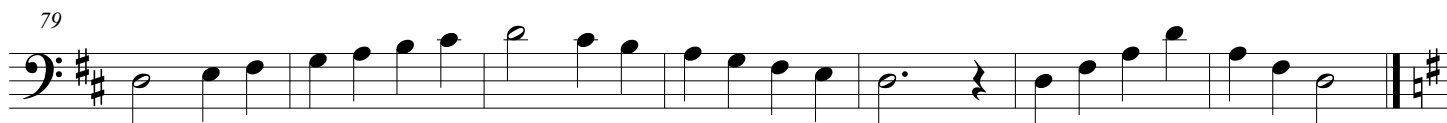
E Major Scale, Your E Scale



A Major Scale, Your A Scale



D Major Scale, Your D Scale



G Major Scale, Your G Scale



12 Major Scales and Arpeggios

Tuba

Band Class Warm-Up

Kelly McCarley

♩ = 80

Bb Chromatic Scale

5

The Bb Chromatic Scale is written on a bass clef staff in 4/4 time. It consists of two lines of music. The first line starts with a Bb and ascends chromatically to a Bb. The second line starts with a Bb and descends chromatically to a Bb. The tempo is marked as quarter note = 80.

C Major Scale, Your C Scale

9

The C Major Scale is written on a bass clef staff in 4/4 time. It consists of two lines of music. The first line starts with a C and ascends to a C. The second line starts with a C and descends to a C. The tempo is marked as quarter note = 80.

F Major Scale, Your F Scale

16

The F Major Scale is written on a bass clef staff in 4/4 time. It consists of two lines of music. The first line starts with an F and ascends to an F. The second line starts with an F and descends to an F. The tempo is marked as quarter note = 80.

Bb Major Scale, Your Bb Scale

23

The Bb Major Scale is written on a bass clef staff in 4/4 time. It consists of two lines of music. The first line starts with a Bb and ascends to a Bb. The second line starts with a Bb and descends to a Bb. The tempo is marked as quarter note = 80.

Eb Major Scale, Your Eb Scale

30

The Eb Major Scale is written on a bass clef staff in 4/4 time. It consists of two lines of music. The first line starts with an Eb and ascends to an Eb. The second line starts with an Eb and descends to an Eb. The tempo is marked as quarter note = 80.

Ab Major Scale, Your Ab Scale

37

The Ab Major Scale is written on a bass clef staff in 4/4 time. It consists of two lines of music. The first line starts with an Ab and ascends to an Ab. The second line starts with an Ab and descends to an Ab. The tempo is marked as quarter note = 80.

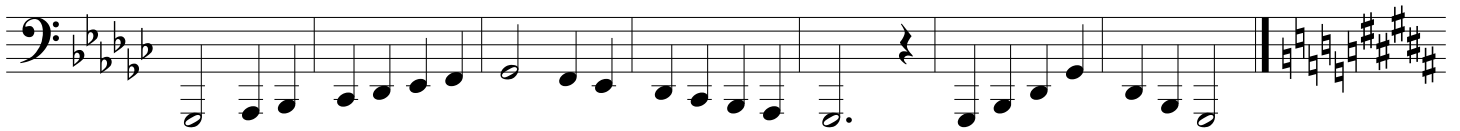
Db Major Scale, Your Db Scale

44



Gb Major Scale, Your Gb Scale

51



B Major Scale, Your B Scale

58



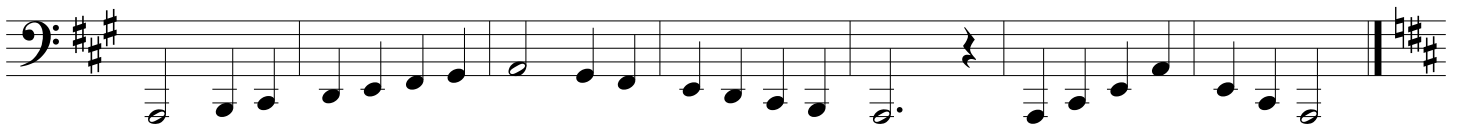
E Major Scale, Your E Scale

65



A Major Scale, Your A Scale

72



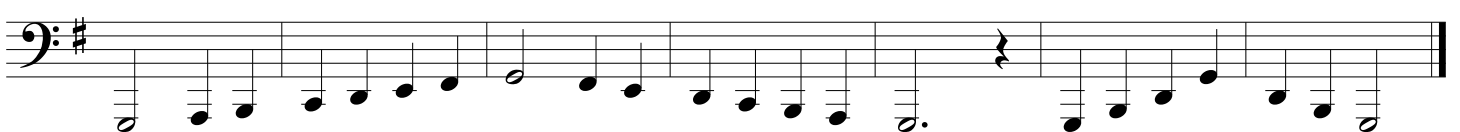
D Major Scale, Your D Scale

79



G Major Scale, Your G Scale

86



12 Major Scales and Arpeggios

Xylophone

Band Class Warm-Up

Kelly McCarley

♩ = 80

Bb Chromatic Scale

Musical notation for the Bb Chromatic Scale. It consists of two staves of music in 4/4 time. The first staff starts on Bb and ascends chromatically to Bb. The second staff starts on Bb and descends chromatically to Bb. The tempo is marked as ♩ = 80.

C Major Scale, Your C Scale

Musical notation for the C Major Scale. It consists of two staves of music in 4/4 time. The first staff starts on C and ascends to C. The second staff starts on C and descends to C. The tempo is marked as ♩ = 80.

F Major Scale, Your F Scale

Musical notation for the F Major Scale. It consists of two staves of music in 4/4 time. The first staff starts on F and ascends to F. The second staff starts on F and descends to F. The tempo is marked as ♩ = 80.

Bb Major Scale, Your Bb Scale

Musical notation for the Bb Major Scale. It consists of two staves of music in 4/4 time. The first staff starts on Bb and ascends to Bb. The second staff starts on Bb and descends to Bb. The tempo is marked as ♩ = 80.

Eb Major Scale, Your Eb Scale

Musical notation for the Eb Major Scale. It consists of two staves of music in 4/4 time. The first staff starts on Eb and ascends to Eb. The second staff starts on Eb and descends to Eb. The tempo is marked as ♩ = 80.

Ab Major Scale, Your Ab Scale

Musical notation for the Ab Major Scale. It consists of two staves of music in 4/4 time. The first staff starts on Ab and ascends to Ab. The second staff starts on Ab and descends to Ab. The tempo is marked as ♩ = 80.

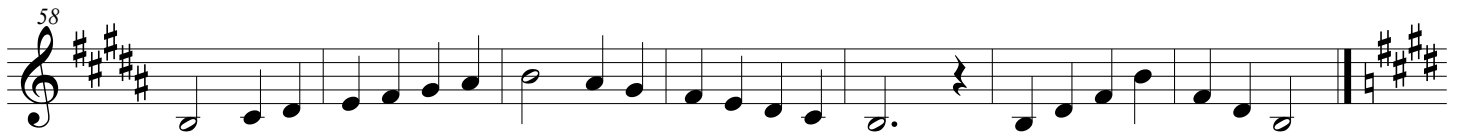
Db Major Scale, Your Db Scale



Gb Major Scale, Your Gb Scale



B Major Scale, Your B Scale



E Major Scale, Your E Scale



A Major Scale, Your A Scale



D Major Scale, Your D Scale



G Major Scale, Your G Scale

